

Author: Chaire BEA

Contributing authors: Amandine Rave, Alice de Boyer des Roches

Graphics: Ilann Adjedj

DOI: 10.5281/zenodo.12913161



<https://chaire-bea.vetagro-sup.fr/en/>

March 2022

Species sheet – All about dairy cows!



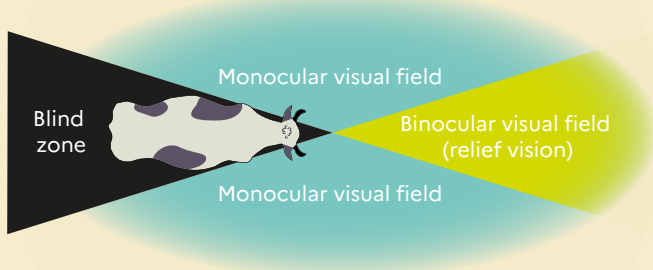
You can't start the day without a drop of milk in your coffee, or wouldn't consider eating pasta without cheese? But what do you really know about dairy cows, their size, weight, life expectancy, cognitive abilities, social behaviour, etc.?

Let us discover in pictures the main characteristics of Annabelle, our dairy cow!

Sensory abilities

View

Cows' visual field is panoramic (300° vision).



They are short-sighted, their near vision is clear and their **far vision is blurred**.

Regarding colors, they effectively distinguish **red**, **yellow** and **orange** but poorly distinguish **blue**, **gray** and **green**.

Cows have a very **good perception of movement**.



But they **adapt slowly** to light changes (~3 min).

Hearing

Cows are **very sensitive to high-pitched sounds**, especially shrill and squeaky sounds. However, they are less sensitive to low-pitched sounds.



The **bovine auricular pavilion can turn in any direction**, allowing them to localize sounds.

Smell

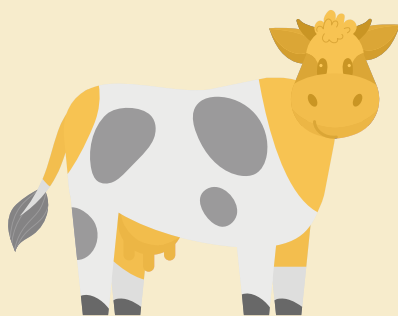
They have a **very fine sense of smell**, which they use for **communication** (via pheromones) and **exploration** (recognition of fellow animals, the breeder, sexual interactions...).

Taste

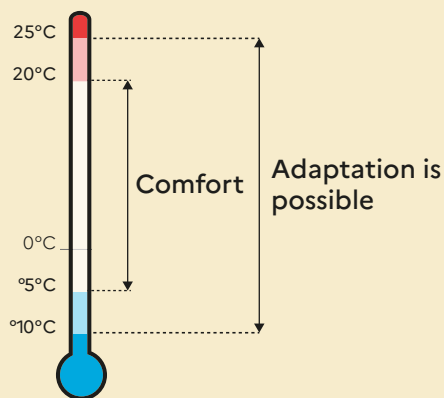
Cows are **able to identify the 5 primary tastes** (sweet, salty, bitter, sour, umami).

They are **attracted to sweet and salty foods** and are indifferent to bitter and acidic foods.

Touch



Most sensitive areas



Thermal sensitivity

Touch is a highly developed sense with touch receptors and the ability to feel pain all over the body.

Temperature perception depends on humidity and wind speed.