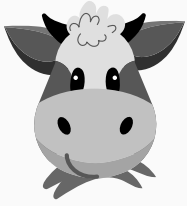


Dairy cow

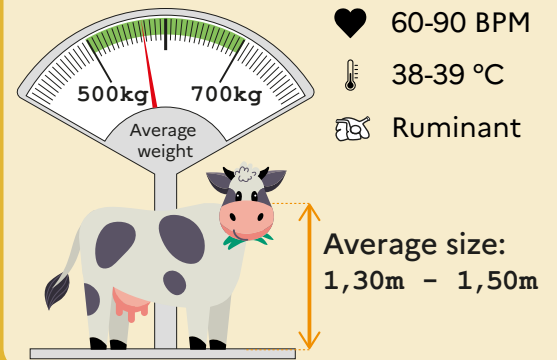
ID CARD



Scientific name:	BOS TAURUS
Order:	MAMMALS
Family:	BOVIDAE
Life expectancy:	20 YEARS
Gestation:	9 MONTHS
Domestication:	8000 YEARS BC.
Signature:	Annabelle

```
IDUKANNABELLE<<<<<<<<<<<<<<<<<<69280
012299293232BOSTAURUS<<<<<<<<<<<<<<<<<<
```

Physiology



Social Behaviour



Social cohesion

Cows form a **tight group** with preferential relationships.

Stressed out cows convey their stress to other cows but get soothed by a calm group.



Dominance

A **dominant animal** will have priority access to food or bedding.

Thus, direct conflict tends to be avoided through posturing.



Leadership

Groups have **leaders, followers**
and independent animals.

Leaders will influence the activities and movements of their group mates.



Cognitive abilities

Cows can **discriminate** between several animal species and different individuals of the same species.

They can also **generalize** their relationship with an individual (e.g., a human) to its entire species.

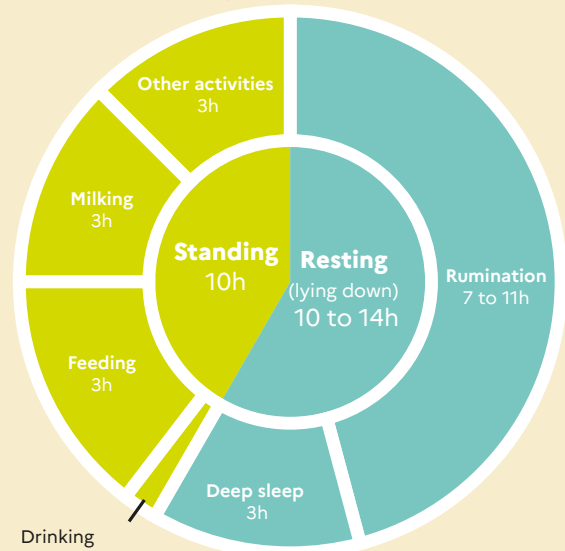


DID YOU KNOW?

Cows are able to recognize as much as **seventy** other cows!

Typical day

of a dairy cow kept indoors



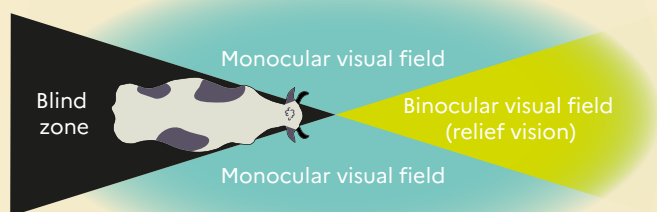
Drinking

Varies according to housing type,
farm management, weather, age and cattle welfare

Sensory abilities

View

Cows' visual field is panoramic (300° vision).



They are short-sighted, their near vision is clear and their **far vision is blurred**.

Regarding colors, they effectively distinguish **red**, **yellow** and **orange** but poorly distinguish **blue**, **gray** and **green**.

Cows have a very **good perception of movement**.



But they **adapt slowly** to light changes (~3 min).

Hearing

Cows are **very sensitive to high-pitched sounds**, especially shrill and squeaky sounds. However, they are less sensitive to low-pitched sounds.



The **bovine auricular pavilion can turn in any direction**, allowing them to localize sounds.

Smell

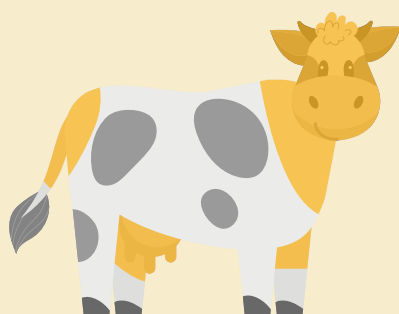
They have a **very fine sense of smell**, which they use for **communication** (*via pheromones*) and **exploration** (*recognition of fellow animals, the breeder, sexual interactions...*).

Taste

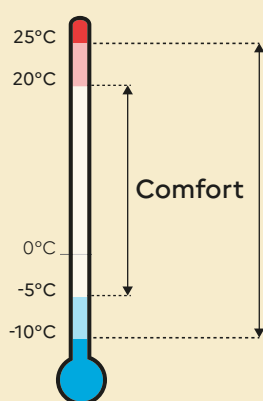
Cows are **able to identify the 5 primary tastes** (*sweet, salty, bitter, sour, umami*).

They are **attracted to sweet and salty foods** and are indifferent to bitter and acidic foods.

Touch



Most sensitive areas



Thermal sensitivity

Touch is a highly developed sense with touch receptors and the ability to feel pain all over the body.

Temperature perception depends on humidity and wind speed.